



INSTALLATION AND TESTING PROCEDURE



North Shore Safety
7335 Production Drive
Mentor, Ohio 44060
Phone: 440.205.9188
Fax: 440.205.9187
Toll-free: 877.472.3348
Web: www.nssltd.com
Email: sales@nssltd.com

IMPORTANT!

THIS DEVICE MUST BE INSTALLED BY A QUALIFIED PERSON
WHO UNDERSTANDS ELECTRICAL CIRCUITS.

Please read all the information on this sheet.

WARNING

Equipment Leakage Circuit Interrupter (ELCI) is a safety device under normal use and it is not intended to promote activity of elevated risk. Use only within the specified operating parameters (Failure to do so may result in bodily injury). Consult a licensed electrician for assistance on installation and repairs. Do not use this ELCI if it fails to function as instructed. Never attempt to tamper with this device. This ELCI does not provide protection against shocks caused by holding both circuit conductors. This ELCI does not provide protection against electrical shocks generated by the conductors supplying power to the device. **Note: primary feed to ELCI is live even when ELCI is tripped. Unit should be powered down at line (supply) side breaker before servicing load side of ELCI.**

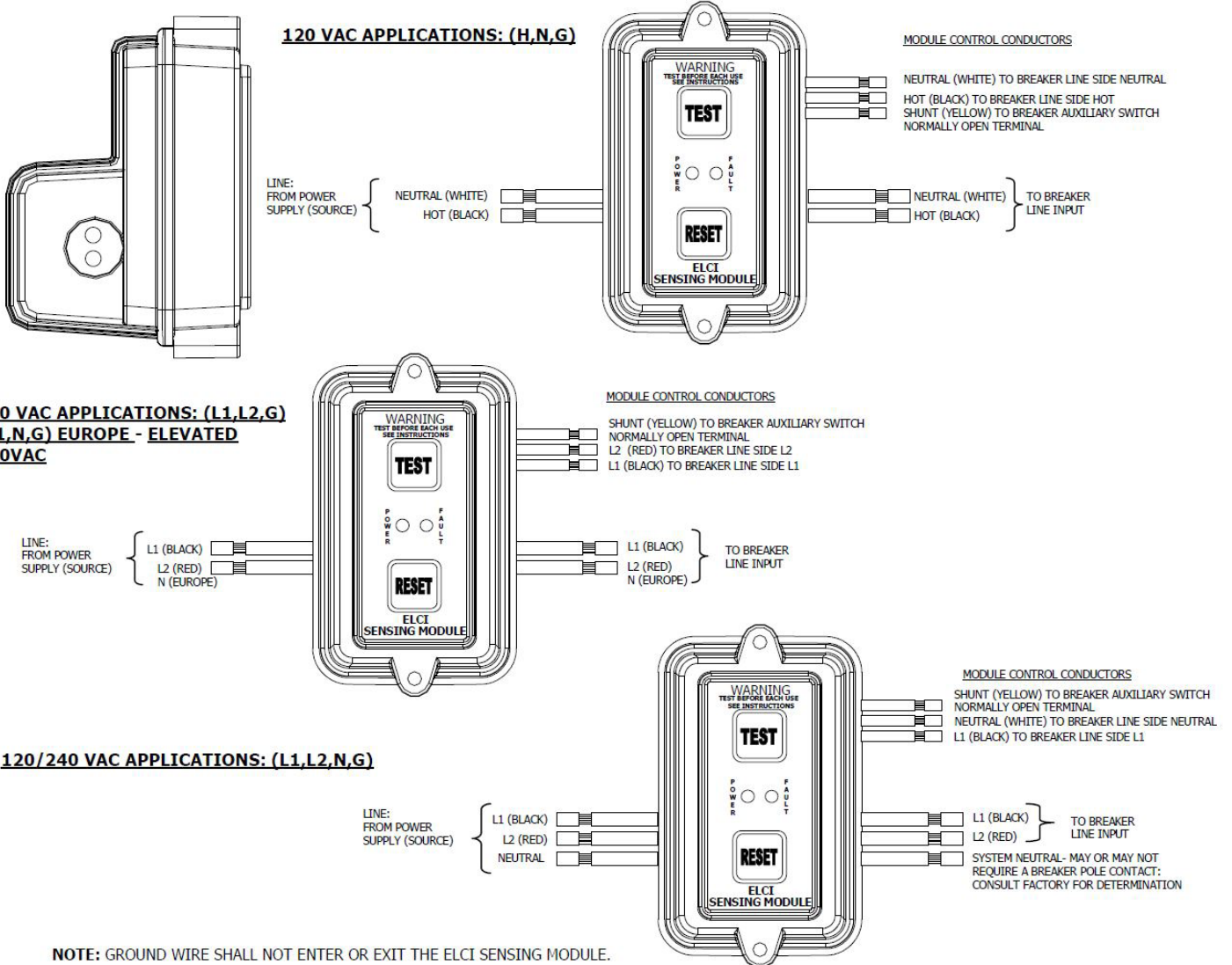
North Shore Safety TWO YEAR LIMITED MANUFACTURER'S WARRANTY

North Shore Safety warrants to the consumer its Line-Gard Ground Fault Circuit Interrupter (GFCI) to be free from defects in materials and workmanship, under normal use and service, for a period of two years from date of purchase. North Shore Safety, at its option, will repair or replace the defective GFCI without charge within 2-years of the date of the product's purchase provided that the defect occurred during normal use. The defective unit must be returned freight prepaid, with a RGA (Returned Goods Authorization) including a description of the problem, and a proof of purchase date to the Quality Assurance Dept. North Shore Safety, Ltd. 7335 Production Drive, Mentor, OH 44060.

North Shore Safety will not be liable, directly or indirectly, for installation or removal of this device, or for any personal injury, or property damages, or incidental, indirect, or consequential damages of any kind, as a result of a defective device. The exclusive remedy, under this warranty, is the repair or replacement of the defective device. In no case shall North Shore Safety's liability exceed the purchase price. This warranty is void or not covered if this device is found to be: not properly installed, tampered with, not used according to label instructions and ratings, enclosure breached (button cover label, conduit hubs, vent, or lid fasteners), surged, short circuited, or abused.

WIRING GUIDE:

DANGER: HAZARD OF ELECTRICAL SHOCK, BURN, OR EXPLOSION. Disconnect power at main power feed before you start the installation. Failure to do so may cause severe shock, personal injury or death.

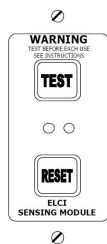


1. READ ALL THE INSTRUCTIONS IN THIS LEAFLET AND ON THE DEVICE LABEL.
2. IDENTIFY ALL THE FEATURES AND WIRES (SEE DRAWING)
3. IDENTIFY LINE WIRES AND LOAD WIRES.
4. VERIFY THAT THE RATINGS ON THE DEVICE INCLUDING BREAKER MATCH YOUR FIELD LINE RATINGS.
5. STRIP WIRES TO 3/8", OR AS RECOMMENDED FOR YOUR CONNECTIONS: (MODULE MAY INCLUDE FIELD TERMINATIONS). MODULE SUPPLY MUST BE TERMINATED IN CONJUNCTION WITH AND IN COMPLIANCE OF ABYC E-11
6. CHOOSE THE RIGHT WIRING APPLICATION (120VAC, 240VAC USA, 240VAC EUROPE OR SPLIT PHASE 120/240VAC) AND CONNECT WIRES ACCORDING TO THE DRAWING.
7. PLACE SUPPLIED TEST INSTRUCTION LABEL IN CLOSE PROXIMITY TO THE GROUND FAULT SENSING MODULE MOUNTING AS SHOWN BELOW:

TESTING AND TROUBLESHOOTING

NORMAL OPERATING STATE – SENSING DEVICE GREEN LED IS “ON” AND CIRCUIT BREAKER IS AT “ON” POSITION

1. PRESS “TEST” BUTTON: GREEN LED SHOULD GO “OUT” AND RED LED SHOULD START “BLINKING”. CIRCUIT BREAKER SHOULD TRIGGER TO “OFF” POSITION
2. IF SENSING DEVICE LED OR BREAKER DOES NOT TRIP OR CHANGE STATE: “DO NOT USE” CONSULT AN ELECTRICIAN FOR ASSISTANCE
3. PRESS “RESET” BUTTON: RED LED SHOULD TURN “OFF” AND GREEN LED SHOULD TURN ON.
4. MANUALLY RESET (SWITCH) CIRCUIT BREAKER TO “ON” POSITION TO RESTORE CIRCUIT POWER



TEST INSTRUCTIONS
ELCI SENSING MODULE
TEST BEFORE EACH USE

NORMAL OPERATING STATE – SENSING DEVICE GREEN LED IS “ON” AND CIRCUIT BREAKER IS AT “ON” POSITION.

STEP 1: PRESS “TEST” BUTTON: GREEN LED SHOULD GO “OUT” AND RED LED SHOULD COME “ON” AND CIRCUIT BREAKER SHOULD TRIGGER TO “OFF” POSITION.

STEP 2: IF SENSING DEVICE LED OR BREAKER DOES NOT TRIP OR CHANGE STATE: “DO NOT USE” CONSULT AN ELECTRICIAN FOR ASSISTANCE.

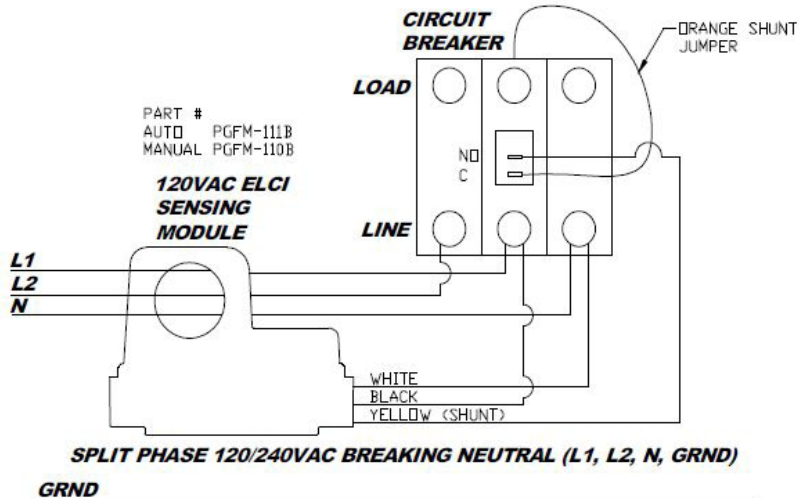
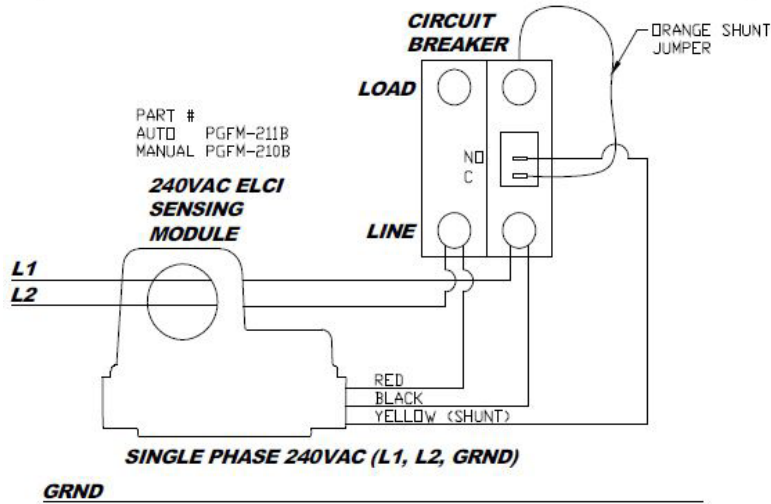
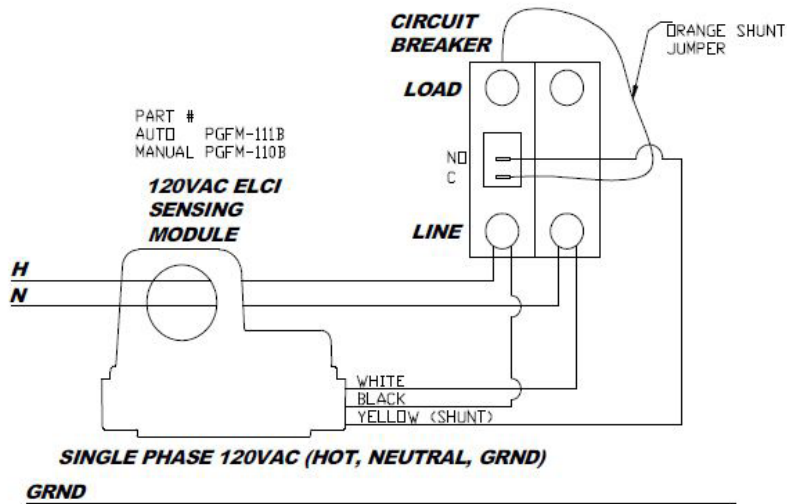
STEP 3: PRESS “RESET” BUTTON: RED LED SHOULD TURN “OFF” AND GREEN LED SHOULD TURN ON.

STEP 4: MANUALLY RESET (SWITCH) CIRCUIT BREAKER TO “ON” POSITION TO RESTORE CIRCUIT POWER.

WARNING:
 IF ABOVE TESTS FAILS, DO NOT USE THIS ELCI. CONSULT A QUALIFIED ELECTRICIAN FOR REPAIR OR REPLACEMENT.

WARNING:
 IF ABOVE TESTS FAILS, DO NOT USE THIS ELCI.

TYPICAL WIRING DIAGRAMS



NOTES:

- 1) CIRCUIT BREAKER LINE/LOAD MAY BE AT OPPOSITE ENDS.
- 2) L1 (BLACK WIRE) SHALL ALWAYS BE CONNECTED TO THE SAME POLE AS THE SHUNT COIL & AUXILIARY SWITCH.